

Mini5C+ Standard Package



Mini5C+ available in either pelican backpack or yellow hard case

www.FiberFoxAmerica.com



Mini 5C+

Economical & High Performance Core Alignment Splicer

FiberFox MiniSeries Splicers 12R+, 6S+, 5C+, 4S+ The Most Complete Fusion Splicer Kit

MiniSeries Splicer	Cooling Tray	Lint Free Swabs (100) (12R+)	Car Charger
Precision Cleaver w/ Auto Bin & Soft case	FOX-SOC HOLDER	5x Magnifier with LED Light (12R+)	USB Firmware Update Cable
Extra Precision Cleaver (12R+)	FOX-SOC HOLDER2/3	V-Groove Cleaning Pen (12R+)	Three-Hole Stripper
Thermal Stripper (All Kits)	SL60-100 Splice Sleeves (6S+,5C+,4S+)	Anti Static Brush (12R+)	Phillips Screwdriver
- includes AC adapter, Brush	SL40R-50 Splice Sleeves (12R+)	Sweeper Brush (12R+)	Power Cord / AC Adapter
Two Battery Packs (All Kits)	"One Tap" Cleaning Fluid	SOC Heater Block	Soft Cover User Manual / CD
Fiber Holders (2pr-250,900) (6S+,5C+,4S+)	Lint Free Wipes (50)	Spare Electrodes (pair)	Yellow Hard Case
Fiber Holders (3pr-12f,250,900) (12R+)	Splice Tray Holder		w/ Shoulder Strap

Specifications

Splicing Method	Core Alignment, DCID (Digitalized Core Image Detecting) System
Average Loss	SM(0.02dB) / MM(0.01dB) / DS(0.04dB) / NZDS(0.04dB) / G.657(0.02dB)
Return Loss	>>60dB
Splice Time	SM Quick mode : 6 sec. / SM Average : 8 sec.
Electrode Lifespan	>5,500 arcs
Applicable Fiber	SM(ITU-T G.652&G.657) / MM(ITU-T G.651) / DS(ITU-T G.653) / NZDS(ITU-T G.655) / IT-G657A / IT-G657B, 0.25mm, 0.9mm, 2.0mm, 2.4mm, 3.0mm, FLAT(Indoor cable)
Cleaved Length	Coating Diameter<0.25mm=5-16mm, Coating Diameter>0.25mm=8-16mm minimum
Coating Diameter	100 ~ 3,000um
Cladding Diameter	80-150um
Heating Programs	Factory installed mode : 4, User installable mode : 32
Heating Time	Typical: 10 sec. (60mm sleeve) / 5 sec. (Micro sleeve: 60mm cutting diameter 250um)
Protection Sleeve	40mm, 60mm, SOC Connector
Data Output	USB 2.0
Splice Programs	Factory installed mode: 17, User installable mode: 128
Splice Memory	Up to 10,000 records and 2,000 splice images
Illumination	LED emitting white light
Battery	Li-ion, 5200mAh Typical 220 Cycles(Splice & Heat) / single battery (2 Batteries in package)
Power Supply	AC 100-240V input or DC 12.6V 1.8A
Monitor	4.3"LED, 720p HD color monitor / Full Touch Screen (Tempered Glass)
Cameras	2 CCD camera system
Magnification	XY style : 160 power, X/Y : 320 power
Weight & Size	1.42kg (without battery) / 123mm X 124mm X 138mm
Wind Protection	The max wind speed 15m/s
Operating Environment	Elevation 0-5,000 meter, -10-50°C, 0-95% relative humidity
Storage Condition	Temperature -20 to 60°C, 0-95% relative humidity, battery -20-40°C
Pull Test	1.96-2.25N (standard)
Attenuation Splicing	Range : 0.1dB ~ 20dBd (0.1dB step)

Economical Core alignment Splicer Compatible with all leading Splice-on Connectors

- Mini5C+ includes larger, more durable case
- LED Lights instead of mirrors
- Auto rotate screen monitor
- Redesigned and faster heater (10s for 60mm sleeve)
- Preheat heating mode (6s for 60mm sleeve)
- Higher screen resolution
- Innovative splice tray holder

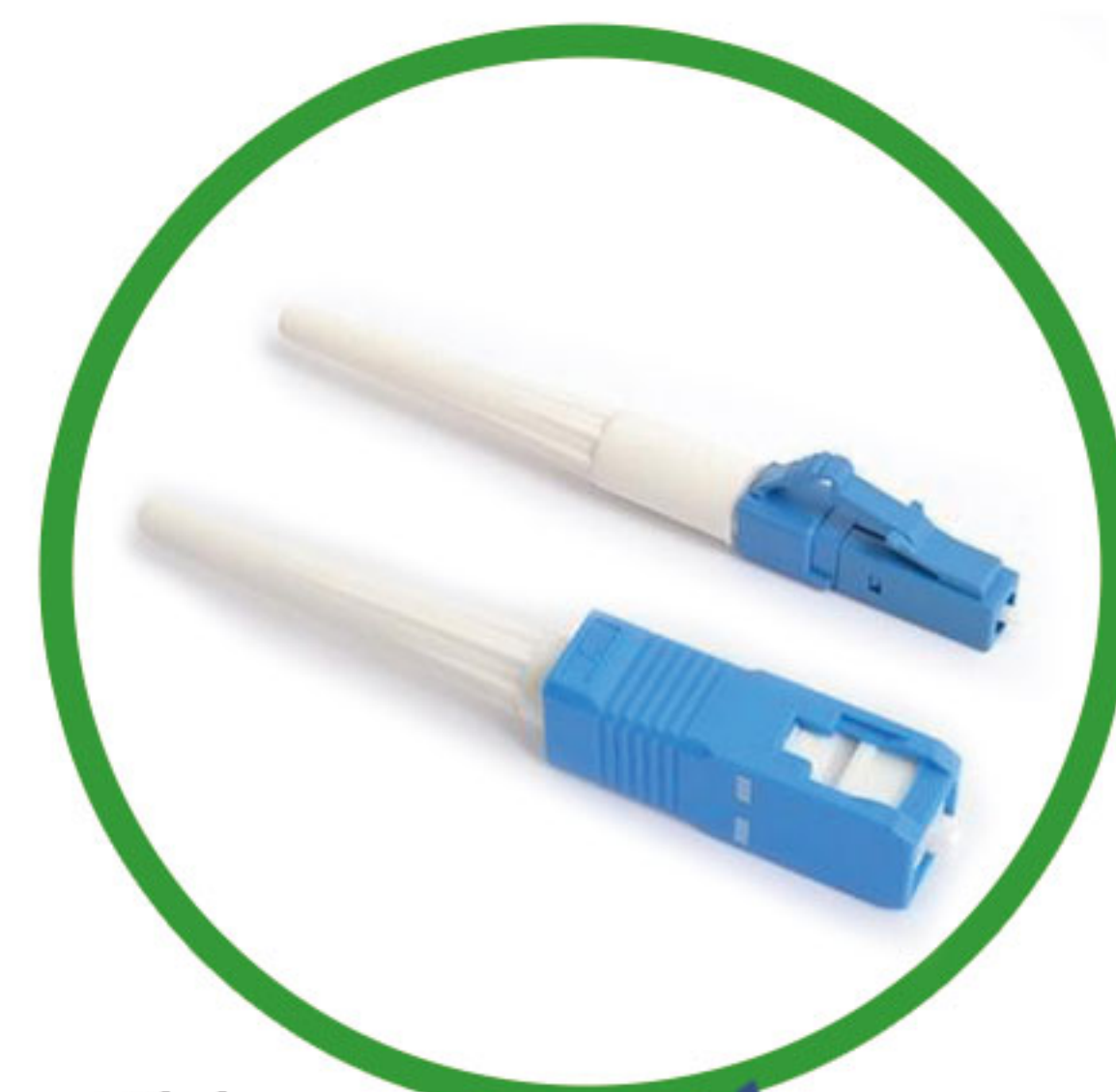
1.42
kg

440
cycles

6
sec

0.02
dB

Characteristic



SOC compatible with all major brands



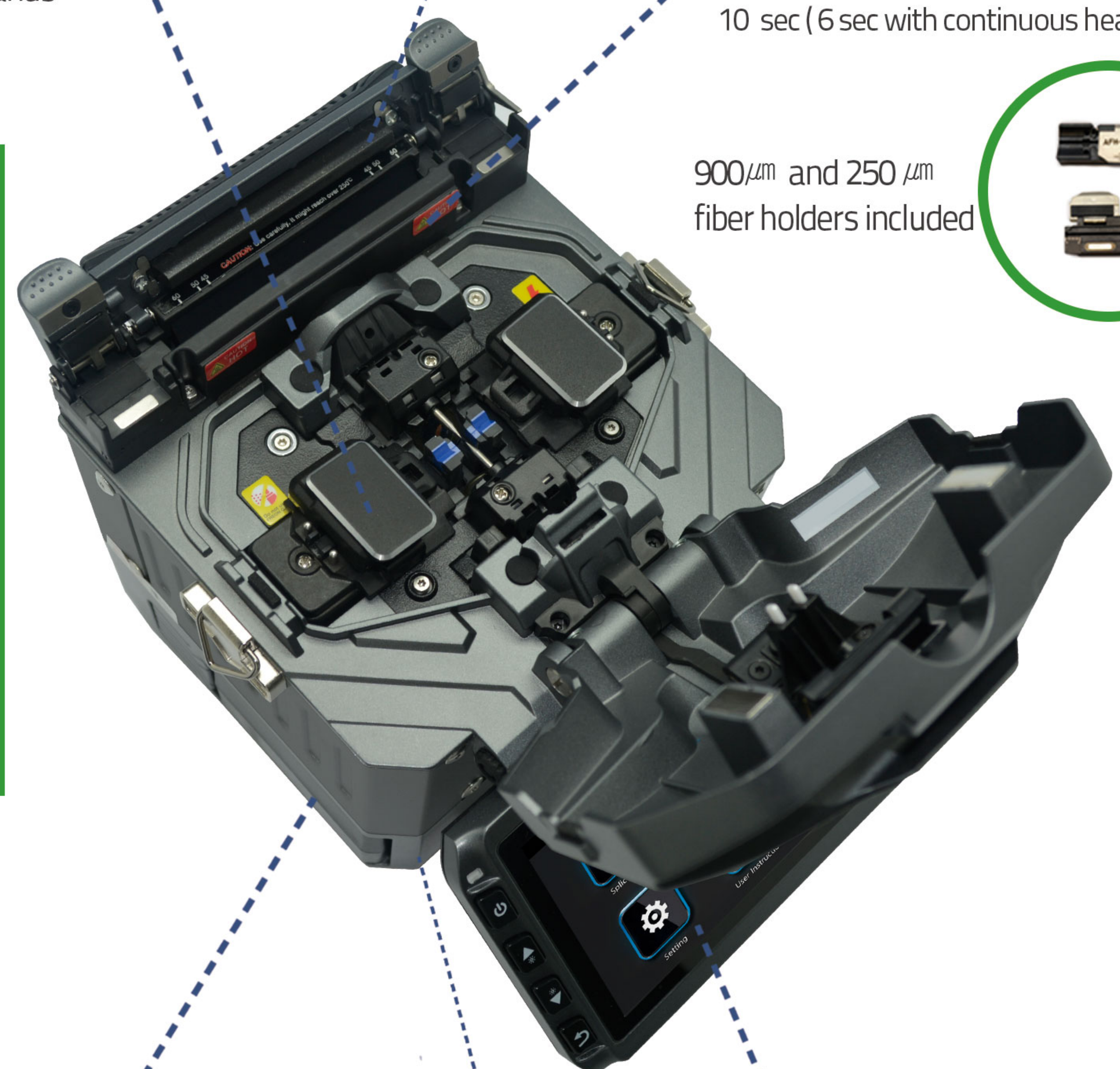
Splice Tray Holder



Fast Heating Time
10 sec (6 sec with continuous heating mode)



900µm and 250µm fiber holders included



Mini 5C+

1.42kg

(Without Battery)

124 x 123 x 138 mm



Industry's First!

Two Batteries are Included

- 220 cycles (splicing & heating) with Two Batteries



Thermal Stripper Included

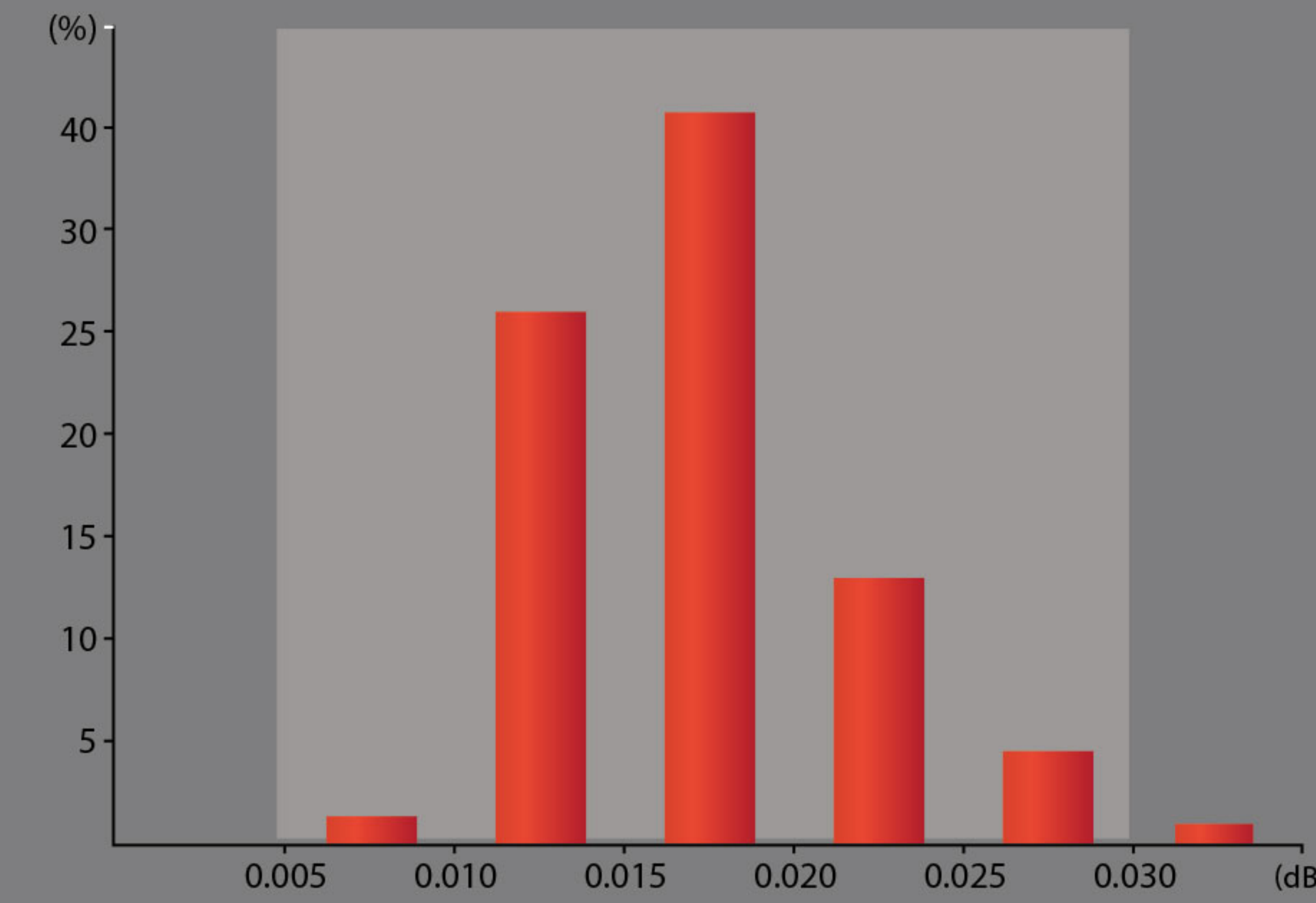


Full Touch Screen
- GUI Interface
- Tempered Glass

01

Performance

Guaranteed Stability and Splicing Performance



0.02dB : (%)

02

The Fastest Splicing Time



6sec

02

Durability

1meter



Anti-shock

IP52 Ingress Protection Rating



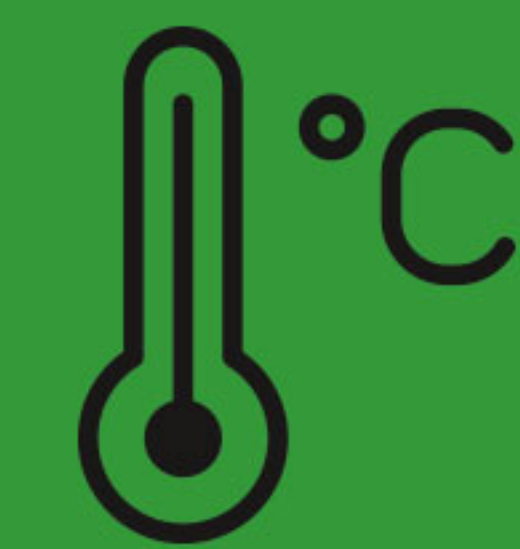
Dustproof

Waterproof

03

Reliability

Perfect performance under any environmental conditions



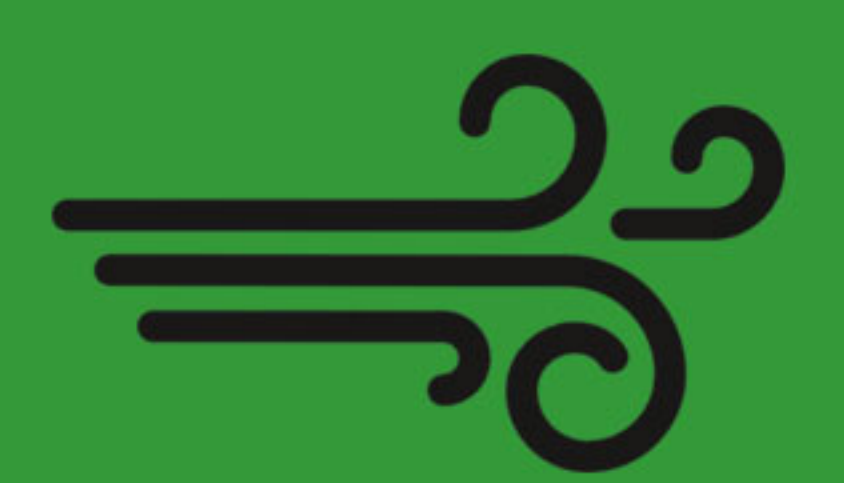
Temperature
-15~60°C



Relative humidity
0~95%



Elevation
0~5000meter



The max wind speed
15m/s

Compliant with IEC Standard